

# Welcome to Roscrea Library



**This is my library**

**Roscrea Library**



**There is a toilet in the  
library I can use**





**Library staff may or may  
not be seated  
at the front desk when I  
enter the library**



**The library staff are friendly  
and  
I can ask them for help**





**This is the kiosk where I  
check in and check out  
my books**



**This is the Adult area**



**This is the Young adult  
Area**





**I can read Newspapers  
and Magazines  
in the library**



**I can study in the  
library**





**The library has  
computers  
which are free to use**



**This is the children's  
area**





**There is always  
something fun to do  
in the library**

**To find out about events  
I can telephone the library  
on (0505) 22032**



**Sometimes the library  
can be noisy**

**I can sit in the tent  
to feel safe**





**Sometimes I might feel  
anxious but that is okay**

**I can sit in the sensory  
corner and  
look at the lights**



**I can play with the  
Sensory toys**





**There are lots of things  
to do  
in the library**

**I can colour a picture  
or I can play  
with the toys**





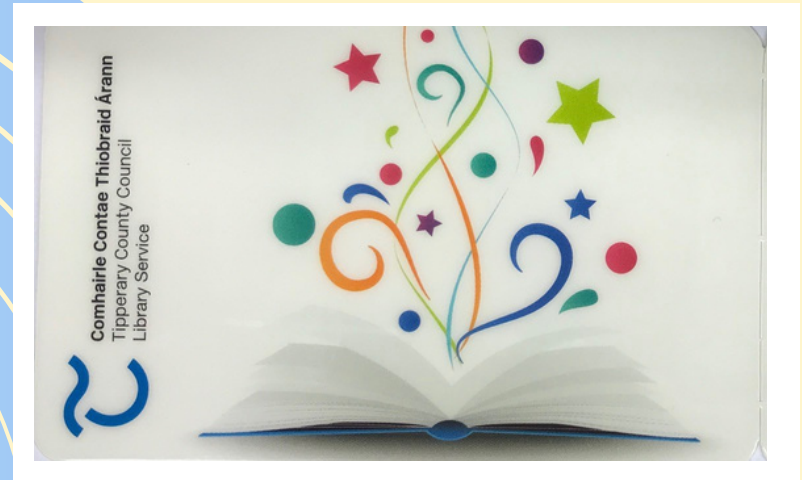
**I can sit and read my book in the library**



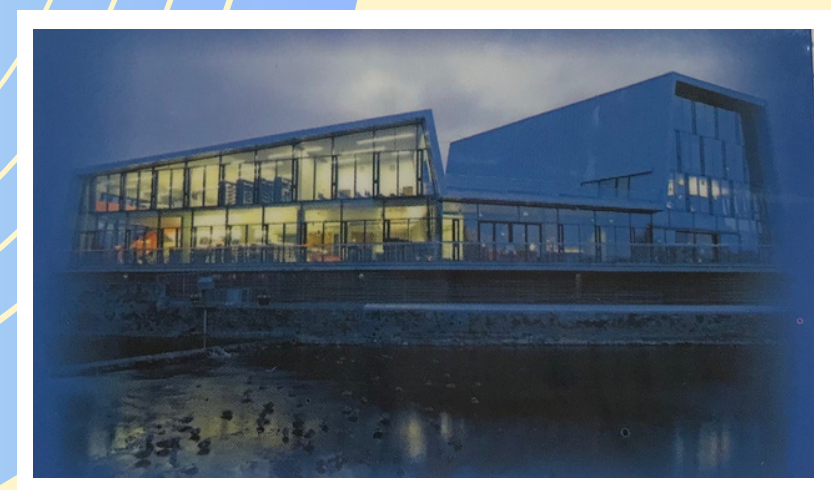


**When it is time to go  
I will check out my  
books using  
my library card**

**CHILD'S CARD**



**ADULT'S CARD**



**I can ask the friendly  
staff to help me check  
my books out and then  
I will leave the library**





**I enjoy visiting the library**

**I will return my books to  
the library in 3 weeks**

